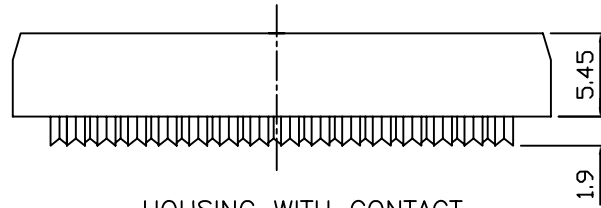
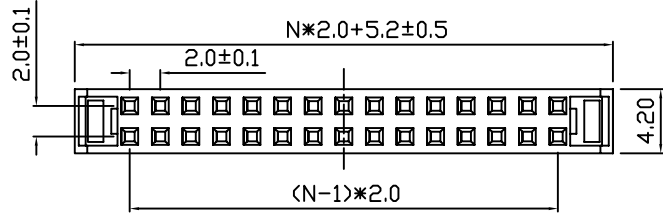
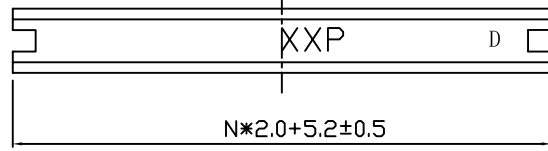
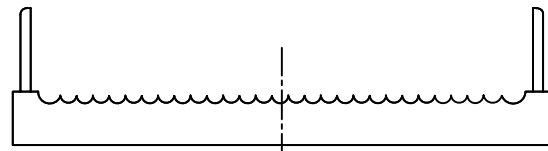


REV.	DESCRIPTION	DRAWN	CHECKED	APPROVED
A	NEW RELEASE	LJH 04/27/05'		



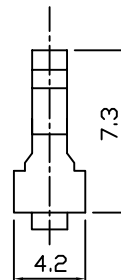
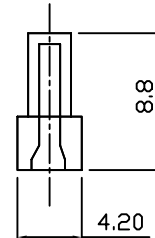
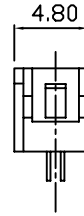
HOUSING WITH CONTACT



COVER



DOWN COVER



NOTES:

1. MATERIAL

- 1.1 INSULATOR:THERMOPLASTIC(UL 94V-0).
- 1.2 CONTACT: COPPER ALLOY.

2. SPECIFICATION

- 2.1 STORAGE TEMPERATURE:-20-70°C.
- 2.2 OPERATING TEMPERATURE:0-85°C.
- 2.3 CONTACT RESISTANCE:20mΩ max.
- 2.4 INSULATION RESISTANCE:1000MΩ min.
- 2.5 DIELECTRIC WITHSTANDING VOLTAGE:AC 500V PER MINUTE.

3. PART NUMBER: DS1017

4. PRODUCT NUMBER CODE:

DS1017- X X X X

- CONTACT PLATING
0: SELECTIVE GOLD FLASH
- POLARIZATION
A: W/
B: W/O
- STRAIN RELIEF
M: W/
N: W/O
- No. OF CONTACTS
10 12 16 20 22 24 26
34 36 40 44 50 56 68
- SERIES No.
DS1017

GENERAL TOLERANCE		ANGLE TOLERANCE		PROJECTION	TITLE	IDC SOCKET PITCH 2.0mm WITH 1.0mm FLAT CABLE			
X.	±0.60	X.	±5°	mm					
.X	±0.38	.X	±3°	A4	SERIES	DS1017 SERIES			
.XX	±0.25	.XX	±2°						
DRAWING TYPE	CUSTOMER			IDC-20F	IDC2-10F	IDC2-34F	IDC2-24F		
SCALE	1:1	SHEET	1 OF 1	IDC-24F	IDC2-14F	IDC2-40F	IDC2-26F		
DRAWING NO.	C-DS1017-XXXX			IDC-26F	IDC2-16F	IDC2-44F	IDC2-30F ()		
				IDC-08F	IDC2-20F	IDC2-50F			

N: HALF OF CONTACTS